

CT-FFC 1811CW arena foil tape arctic



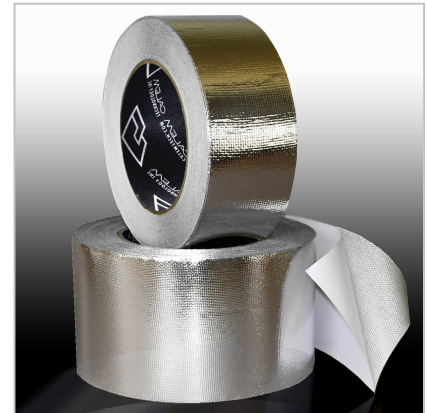
COLD WEATHER ADHESIVE FIBERGLASS MESH REINFORCED ALUMINUM FOIL TAPE

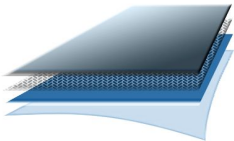
FEATURES:

- ◆ Flame retardant components and acrylic adhesive
- ◆ Very high tensile and tear strength
- ◆ Excellent reflection of heat and light
- ◆ Excellent vapor barrier

TYPICAL APPLICATION:

- ◆ To seal joints of Aluminum-Glass Facing laminated fiberglass blanket/duct board joints, industrial pipe insulation seams
- ◆ As a cladding material for the insulation in the full roll width



Construction		<ul style="list-style-type: none"> ◆ Aluminum Foil ◆ 8 x 8 Mesh Glass Cloth ◆ FR Glue ◆ Silicone release paper liner, Kraft liner available 		
PROPERTIES		Metric	English	TEST METHOD
Backing Thickness		125 Micron	5 mil	PSTS-133 / ASTM D 3652
Total Thickness		180 Micron	7.2 mil	PSTS-133 / ASTM D 3652
Peel Adhesion to Steel		16 N/25mm	58 Oz/inch	PSTC-101 / ASTM D 3330
Rolling Tack		5 cm	2 inch	PSTC-6 / ASTM D 3121
Tensile strength		255 N/25 mm	58 Lb/inch	PSTC-131 / ASTM D 3759
Elongation		5%	5%	PSTC-131 / ASTM D 3759
Service Temperature		-30 ~ +120 °C	-22 ~ + 248 °F	-----
Fire Rating exceed UL 723 requirements)		25/50 & Class 0	25/50 & Class 0	UL 723 & BS476 Pt.6 & 7
Core I.D.		76mm	3"	
Roll width		48mm, 50mm (2"), 60mm, 63mm (2.5"), 72mm, 75mm (3"), 96mm, 100mm (4"); 4 ft for cladding application		
Roll length		45m (50 yards), 50m, custom length		

1. The data above are typical results from tests conducted on samples taken from production runs and may be updated without notice. Typical values are not intended to be used for specification development. Tolerance: Weight and thickness: ±10%; width: ±3mm; length: Cut Roll: ±0.3m, Jumbo Roll ±0.5%.
2. The product should be stored in the original packaging material at 20 +/- 5°C and 40-60% relative humidity and protected from direct sunlight, heat and moisture. Shelf life: One year when stored at the conditions described above.
3. The surface to which the tape is applied must be clean, dry, free of grease and oil and other contaminants and deposits. Recommended temperature of application: 50 – 105 °F (10 – 40 °C).
4. The user is ultimately responsible for determining whether the product is fit for a particular surface and suitable for user's application. No claims will be accepted after product is installed. The user should make necessary tests and trial-application of the tape to confirm suitability for user's special purpose and method of application.
5. Self adhesive tapes are designed for sealing applications only. In the instance when the sides of the joint are subject to mechanical stress, both sides should be securely positioned using appropriate fasteners or hangers prior to the self adhesive tapes application.
6. Calem Technology warranty that the product is free from defects in material and workmanship. Should any failure to conform to this warranty appear within one year after the initial date of shipment, Calem Technology shall, upon notification thereof and substantiation that the product have been stored and applied in accordance with the above requirements, at Calem Technology discretion, replace or credit the product's purchasing price equivalent.
7. Limitation of liability. Calem Technology Inc. and seller of CT Tape products will not be liable for any loss or damage arising from the CT Tape product, whether direct, indirect, special, incidental or consequential, regardless of the legal theory asserted, including warranty, contract, negligence or strict liability.



CT TAPE

1-604-277-6643
186-8120 No. 2 Road
Richmond, BC
V7E 3E6, Canada