

# CT-F4010

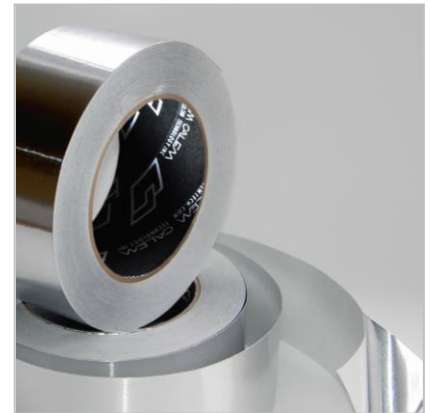
## PROFESSIONAL ALUMINUM FOIL TAPE

### FEATURES:

- ◆ All weather acrylic adhesive with strong adhesion and long holding power and
- ◆ Temperature and aging resistance
- ◆ Excellent reflection of heat and light, Good water vapor resistance

### TYPICAL APPLICATION:

- ◆ To seal joints of metal ducts and insulation facings in ventilation and construction industry



CT-F4010, CT-F4010K			TEST METHOD
Construction	Dead Soft Aluminum Foil // Solvent based acrylic adhesive// Silicone release PE-coated paper liner		
PROPERTIES	Metric	English	
Foil Thickness	40 Micron	1.6 mil	PSTS-133 / ASTM D 3652
Total Thickness (Foil + Adhesive)	80 Micron	3.2 mil	PSTS-133 / ASTM D 3652
Peel Adhesion to Steel	20 N/25mm	72 Oz/inch	PSTC-101 A/ ASTM D 3330 A
Rolling Tack (11 mm ball)	≤ 10 cm	≤ 4 inch	PSTC-6 / ASTM D 3121
Tensile strength	55 N/25 mm	12.5 Lb/inch	PSTC-131 / ASTM D 3759
Elongation	3%	3%	PSTC-131 / ASTM D 3759
Service Temperature	-30 ~ +120 °C	-22 ~ + 248 °F	-----
Core I.D.	76mm	3"	
Roll width	48mm, 50mm (2"), 60mm, 63mm (2.5"), 72mm, 75mm (3"), 96mm, 100mm (4")		
Roll length	27m (30 yards), 30m (100'), 45m (50 yards), 50m, 100m		

1. The data above are typical results from tests conducted on samples taken from production runs and may be updated without notice. Typical values are not intended to be used for specification development. Tolerance: Technical data: ±10%; width: ±3mm; length: Cut Roll: ±2%, Jumbo Roll ±1%.
2. The product should be stored in the original packaging material at 20 +/- 5°C and 40-60% relative humidity and protected from direct sunlight, heat and moisture. Shelf life: One year when stored at the conditions described above.
3. The surface to which the tape is applied must be clean, dry, free of grease and oil and other contaminants and deposits. Recommended temperature of application: 50 – 105 °F (10 – 40 °C).
4. The user is ultimately responsible for determining whether the product is fit for a particular surface and suitable for user's application. No claims will be accepted after product is installed. The user should make necessary tests and trial-application of the tape to confirm suitability for user's special purpose and method of application.
5. Self adhesive tapes are designed for sealing applications only. In the instance when the sides of the joint are subject to mechanical stress, both sides should be securely positioned using appropriate fasteners or hangers prior to the self-adhesive tapes application.
6. Calem Technology warranty that the product is free from defects in material and workmanship at the time Calem Technology ships the product. General Terms and Warranty published on the website are also applied to all products. CALEM TECHNOLOGY MAKES NO OTHER WARRANTIES OR CONDITIONS EXPRESSED OR IMPLIED INCLUDING, BUT NOT LIMITED TO FITNESS FOR PARTICULAR PURPOSE, MERCHANTABILITY, ANY IMPLIED WARRANTY ARISING OUT OF CUSTOM OF USAGE OF TRADE AND/OR COURSE OF DEALING. If the product does not conform to this warranty Calem Technology shall, upon notification thereof and substantiation that the product has been stored and applied in accordance with the above requirements, at Calem Technology discretion, replace or credit the product's purchasing price equivalent.
7. Limitation of liability. Since the project specifics, use and application conditions are entirely beyond Calem Technology control, Calem Technology, or reseller(s) of any CT Tape, CT Foil, CT Glass or CT Plast products do not guarantee results from use of any products or other information and expressly deny liability from any possible damage or loss resulting from the use or application of the products. Calem Technology Inc. and seller of the products will not be liable for any loss or damage arising from product, whether direct, indirect, special, incidental or consequential, regardless of the legal theory asserted, including warranty, contract, Sales of goods Act, negligence or strict liability.



CT TAPE

1-604-277-6643  
186-8120 No. 2 Road  
Richmond, BC  
V7E 3E6, Canada